

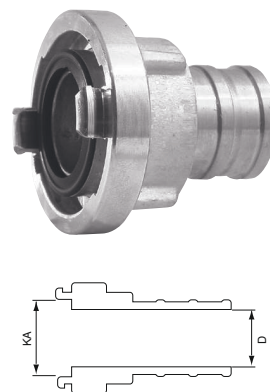
RACORES ASPIRAÇÃO / Storz Couplings

Racores segundo Norma DIN PN16. Roscas segundo ISO 228.1 | Norm Couplings according DIN PN16. Thread according ISO 228.1

tamanho	D	KA	alumínio			bronze	inox
size	hose tail	dist. garras	normal	casting	DIN		

ASPIRAÇÃO para mangueira | SUCTION hoses coupling

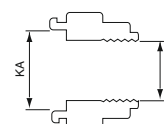
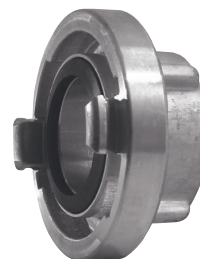
25-D	15/13	31	●	●	●	●	●
25-D	15	31	●	●	●	●	●
25-D	21/19	31	●	●	●	●	●
25-D	25	31	●	●	● (14301)	●	●
32	19	44	●	●	●	●	●
32	25	44	●	●	●	●	●
32	32	44	●	●	●	●	●
38	25	51	●	●	●	●	●
38	32	51	●	●	●	●	●
38	38	51	●	●	●	●	●
52-C	19	66	●	●	●	●	●
52-C	25	66	●	●	●	●	●
52-C	28	66	●	●	●	●	●
52-C	32	66	●	●	●	●	●
52-C	38	66	●	●	●	●	●
52-C	40	66	●	●	●	●	●
52-C	42	66	●	●	●	●	●
52-C	45	66	●	●	●	●	●
52-C	50	66	●	●	●	●	●
52-C	52	66	●	●	● (14321)	●	●
52-C	55	66	●	●	●	●	●
52-C	60	66	●	●	●	●	●
65	38	81	●	●	●	●	●
65	52	81	●	●	●	●	●
65	63	81	●	●	●	●	●
65	65	81	●	●	●	●	●
65	70	81	●	●	●	●	●
65	75	81	●	●	●	●	●
75-B	52	89	●	●	●	●	●
75-B	65	89	●	●	●	●	●
75-B	70	89	●	●	●	●	●
75-B	75	89	●	●	● (14322)	●	●
75-B	80	89	●	●	●	●	●
90	75	105	●	●	●	●	●
90	90	105	●	●	●	●	●
100	100	115	●	●	●	●	●
110A	90	133	●	●	●	●	●
110-A	100	133	●	●	● (14323)	●	●
110-A	125	133	●	●	●	●	●
125	125	148	●	●	●	●	●
150	150	160	●	●	●	●	●
205	205	220	●	●	●	●	●
250	250	278	●	●	●	●	●



RACORES ASPIRAÇÃO / Storz Couplings

Racores segundo Norma DIN PN16. Roscas segundo ISO 228.1 | Norm Couplings according DIN PN16. Thread according ISO 228.1

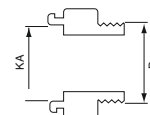
tamanho size	D hose tail	KA dist. garras	normal	alumínio casting	DIN	bronze	inox
ROSCA fêmea FEMALE thread							
25-D	1/2"	31	●	●	●	●	●
25-D	3/4"	31	●	●	●	●	●
25-D	1"	31	●	●	● (14306)	●	●
25-D	1 1/4"	31	●	●	●	●	●
32	1"	44	●	●	●	●	
32	1 1/4"	44	●	●	●	●	●
38	1"	51	●		●	●	●
38	1 1/4"	51	●	●	●	●	●
38	1 1/2"	51	●	●	●	●	●
38	2"	51	●	●	●	●	●
45	1 1/2"	59	●	●	●	●	●
45	2"	59	●	●	●	●	●
52-C	3/4"	66	●	●	●	●	●
52-C	1"	66	●	●	●	●	●
52-C	1 1/4"	66	●	●	●	●	●
52-C	1 1/2"	66	●	●	●	●	●
52-C	2"	66	●	●	● (14321)	●	●
52-C	2 1/2"	66	●	●	●	●	●
65	1"	81	●	●	●	●	●
65	1 1/4"	81	●	●	●	●	●
65	1 1/2"	81	●	●	●	●	●
65	2"	81	●	●	●	●	●
65	2 1/2"	81	●	●	●	●	●
65	3"	81	●	●	●	●	●
75-B	2"	89	●	●	●	●	●
75-B	2 1/2"	89	●	●	● (14308)	●	●
75-B	3"	89	●	●	●	●	●
90	3"	105	●	●	●	●	●
100	4"	115	●	●	●	●	●
110-A	4"	133	●	●	●	●	●
110-A	4 1/2"	133	●	●	● (14323)	●	●
110-A	5"	133	●	●	●	●	●
125	4"	148	●	●	●	●	●
125	5"	148	●	●	●	●	●
150	6"	160	●	●	●	●	●
165	6"	188	●	●	●	●	●
205	8"	220	●	●	●	●	●
250	10"	278	●	●	●	●	●



RACORES ASPIRAÇÃO / Storz Couplings

Racores segundo Norma DIN PN16. Roscas segundo ISO 228.1 | Norm Couplings according DIN PN16. Thread according ISO 228.1

tamanho size	D hose tail	KA dist. garras	normal	alumínio casting	DIN	bronze	inox
ROSCA macho MALE thread							
25-D	1/2"	31	●	●	●	●	●
25-D	3/4"	31	●	●	●	●	●
25-D	1"	31	●	●	●	●	●
25-D	1 1/4"	31	●	●	●	●	●
25-D	1 1/2"	31	●	●	●	●	●
32	1"	44	●	●	●	●	●
32	1 1/4"	44	●	●	●	●	●
38	1 1/4"	51	●	●	●	●	●
38	1 1/2"	51	●	●	●	●	●
38	2"	51	●	●	●	●	●
45	2"	59	●	●	●	●	●
52-C	1"	66	●	●	●	●	●
52-C	1 1/4"	66	●	●	●	●	●
52-C	1 1/2"	66	●	●	●	●	●
52-C	2"	66	●	●	●	●	●
52-C	2 1/2"	66	●	●	●	●	●
65	1 1/4"	81	●	●	●	●	●
65	1 1/2"	81	●	●	●	●	●
65	2"	81	●	●	●	●	●
65	2 1/2"	81	●	●	●	●	●
65	3"	81	●	●	●	●	●
75-B	2"	89	●	●	●	●	●
75-B	2 1/2"	89	●	●	●	●	●
75-B	3"	89	●	●	●	●	●
90	3"	105	●	●	●	●	●
100	4"	115	●	●	●	●	●
110-A	4"	133	●	●	●	●	●
110-A	5"	133	●	●	●	●	●
125	5"	148	●	●	●	●	●
150	6"	160	●	●	●	●	●
165	6"	188	●	●	●	●	●
205	8"	220	●	●	●	●	●
250	10"	278	●	●	●	●	●



RACORES ASPIRAÇÃO / Storz Couplings

Racores segundo Norma DIN PN16. Roscas segundo ISO 228.1 | Norm Couplings according DIN PN16. Thread according ISO 228.1

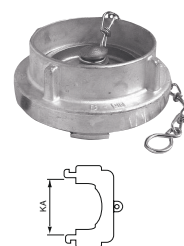
tamanho	D	KA	alumínio			bronze	inox
size	hose tail	dist. garras	normal	casting	DIN		

REDUÇÃO | REDUCING

38	25D	51/31	●	●	●	●	●
45	25D	59/31	●	●	●	●	●
52-D	25D	66/31	●	●	● (14306)	●	●
52-D	32	66/44	●	●	●	●	●
52-D	38	66/51	●	●	●	●	●
65	38	81/51	●	●	●	●	●
65	45	81/51	●	●	●	●	●
65	52D	81/66	●	●	●	●	●
75-B	52C	89/66	●	●	● (14342)	●	●
75-B	65	89/81	●	●	●	●	●
90	75B	105/89	●	●	●	●	●
100	65	115/81	●	●	●	●	●
100	75B	115/89	●	●	●	●	●
100	90	115/105	●	●	●	●	●
110A	52C	133/66	●	●	●	●	●
110A	65	133/65	●	●	●	●	●
110A	75B	133/89	●	●	● (14343)	●	●
110A	90	133/105	●	●	●	●	●
110A	100	133/115	●	●	●	●	●
125	100	148/115	●	●	●	●	●
125	110A	148/133	●	●	●	●	●
150	100	160/115	●	●	●	●	●
150	110A	160/133	●	●	●	●	●
150	125	160/125	●	●	●	●	●
165	110A	188/133	●	●	●	●	●
165	150	188/160	●	●	●	●	●
205	150	220/160	●	●	●	●	●
250	205	278/220	●	●	●	●	●

TAPÃO | CAP

25-D	1"	31	●	●	● (14310)	●	●
32	1 1/4"	44	●	●	●	●	●
38	1 1/2"	51	●	●	●	●	●
45	-	59	●	●	●	●	●
52-C	2"	66	●	●	● (14311)	●	●
52-D	2"	66	●	●	●	● (86207)	●
65	2 1/2"	81	●	●	●	●	●
75-B	3"	89	●	●	● (14312)	● (86207)	●
90	-	105	●	●	●	●	●
100	4"	115	●	●	●	●	●
110-A	4 1/2"	133	●	●	● (14313)	●	●
125	5"	148	●	●	●	●	●
150	6"	160	●	●	●	●	●
205	8"	220	●	●	●	●	●
250	10"	278	●	●	●	●	●



RACORES ASPIRAÇÃO / Storz Couplings

Racores segundo Norma DIN PN16. Roscas segundo ISO 228.1 | Norm Couplings according DIN PN16. Thread according ISO 228.1

tamanho / size	KA - dist. garras	neopreno branco	neopreno preto
JUNTAS seals			
1/2" - 3/4" - 1"	25-D	●	●
1 1/2" - 2"	52-C	●	●
2 1/2" - 3"	75-B	●	●
4"	110-A	●	●



RACORES COMPRESSÃO / Storz Couplings

Racores segundo Norma DIN PN16. Roscas segundo ISO 228.1 | Norm Couplings according DIN PN16. Thread according ISO 228.1

tamanho / size	D - hose tail	KA - dist. garras	alumínio	bronze	inox
IMPULSÃO para mangueira DELIVERY hose coupling					
52-C	40	66	●	●	●
52-C	45	66	●	●	●
52-C	52	66	●	●	●
75-B	70	89	●	●	●
75-B	75	89	●	●	●
110-A	100	133	●	●	●
25-D	25	31	●	●	●

